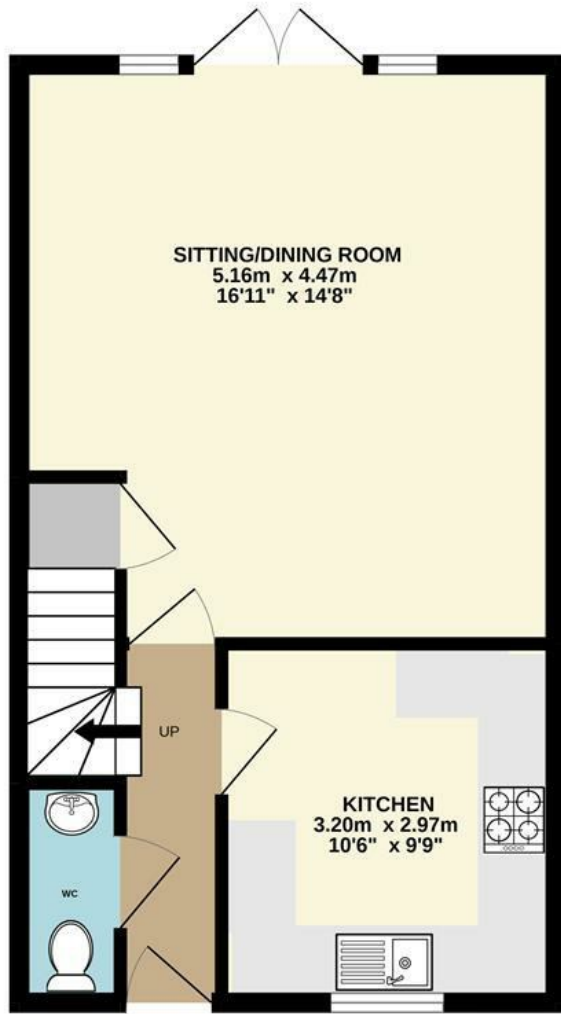
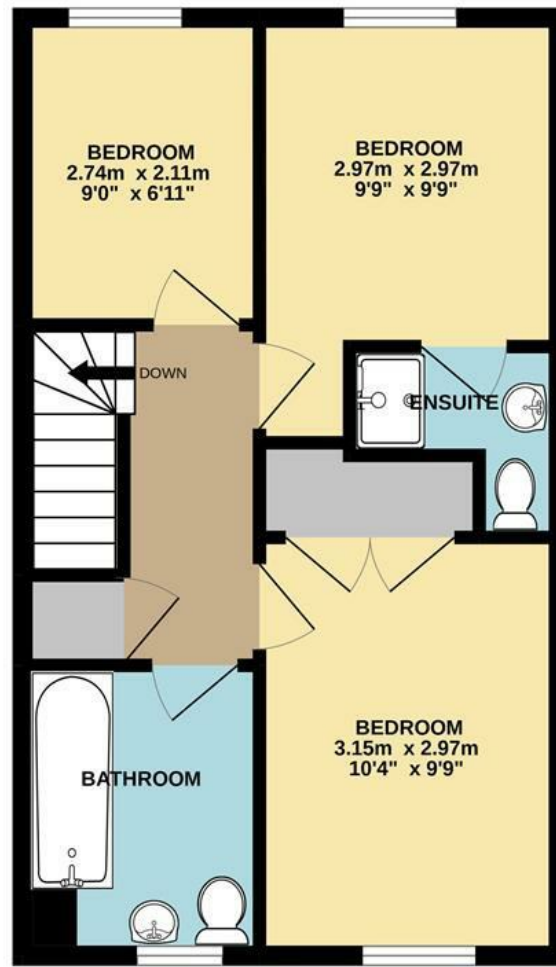


GROUND FLOOR  
39.9 sq.m. (429 sq.ft.) approx.



1ST FLOOR  
39.7 sq.m. (427 sq.ft.) approx.



Energy Efficiency Rating		Current	Potential
Very energy efficient - lower running costs			
(92 plus)	A		
(81-91)	B		
(69-80)	C		
(55-68)	D		
(39-54)	E		
(21-38)	F		
(1-20)	G		
Not energy efficient - higher running costs			
<b>England &amp; Wales</b>		EU Directive 2002/91/EC	

Disclaimer – In accordance with the Property Misdescriptions Act, the company gives notice that all descriptions, references to condition, necessary permissions for use and other details are given in good faith and believed to be correct, but any intending lessees do not rely on them as statements of fact, but must satisfy themselves by inspection or other means, as to their accuracy.

TOTAL FLOOR AREA : 79.6 sq.m. (857 sq.ft.) approx.

Whilst every attempt has been made to ensure the accuracy of the floorplan contained here, measurements of doors, windows, rooms and any other items are approximate and no responsibility is taken for any error, omission or mis-statement. This plan is for illustrative purposes only and should be used as such by any prospective purchaser. The services, systems and appliances shown have not been tested and no guarantee as to their operability or efficiency can be given.  
Made with Metropix ©2022



Worcester Road | Norwich | NR5  
Offers In Excess Of £240,000



abbotFox presents this modern end terraced house. Occupying a prime position within the popular Hampdens development of Costessey, this is an ideal opportunity for any young family or first time buyer. With ample off road parking, and an enclosed private garden, this property has been well maintained by the current owners since its construction. Accommodation comprises; entrance hall, cloakroom, lounge diner and kitchen to the ground floor, with three bedrooms, en-suite shower room and family bathroom to the first floor.

An internal viewing comes highly recommended for this home.

